

# PINK<sup>®</sup> BATTS<sup>®</sup>

What you may not know about  
New Zealand's most iconic insulation

---

**Our commitment to New Zealand:**  
Present & Future

  
BROUGHT TO YOU BY COMFORTECH<sup>®</sup>

# OUR STORY

---

Operating with pride since 1961, Pink® Batts® are the only glasswool insulation manufacturer in New Zealand.

We are focused on innovation, which has resulted in Pink® Batts® having the broadest range of glass wool insulation in New Zealand. In addition, Pink® Batts® are the only glass wool insulation manufacturer to hold an Australasian EPD and Eco Choice Aotearoa 'ecolabel', which independently verifies our environmental credentials.

We are passionate about building energy efficient homes and continue to evolve our technology to deliver high-performing glass wool insulation, specifically designed for our New Zealand environment.

Our Pink® Batts® are made from over 80% recycled glass, diverting over 9 million kilograms of New Zealand glass waste from landfill each year.



# OUR ENVIRONMENTAL CREDENTIALS

---



The Environmental Product Declaration (EPD) is one of the most reliable ways to know how carbon-intensive materials are.

Pink® Batts® are the only glass wool insulation manufacturer to hold a New Zealand specific EPD. This independently verifies our low embodied carbon footprint due to local manufacturing, using renewable energy and locally sourced raw materials.

---



Pink® Batts® are the only glass wool insulation brand in New Zealand to have been awarded the 'ecolabel' by Eco Choice Aotearoa. Through strict science backed criteria and on-site audits, this award showcases that we prioritise our environmental and social responsibility.

---



Our BRANZ appraisal means that our Pink® Batts® insulation have had an in-depth and independent evaluation to assess that our products are fit for purpose, meet the Building Code performance requirements and perform over the lifetime of the building. Our breadth of BRANZ appraised products enables the minimisation of operational carbon.

---



**Download our  
Environmental  
Credentials**

**WE'RE PINK**

# AND WE'RE GREEN TOO

---

## Diverting Waste from Landfill

- Our Pink® Batts® are made from over 80% recycled glass, enabling us to divert approximately 9 million kilograms of New Zealand's glass waste from landfill each year.
- Our Pink® Batts® packaging is 100% recyclable and recycled into new packaging, again and again.
- Our expert insulation installer network, PinkFit® help to minimise Pink® Batts® construction waste onsite.

## Energy Efficiency

- As a New Zealand manufacturer, our electricity used during manufacturing is generated from sources that average around 81% renewable.
- All our company vehicles are hybrid and our forklifts at our Pink® Batts® manufacturing site are all being converted to electric.
- Pink® Batts® are specifically designed for New Zealand building code and conditions, enabling the reduction of operational carbon.

## Production Waste Consumption

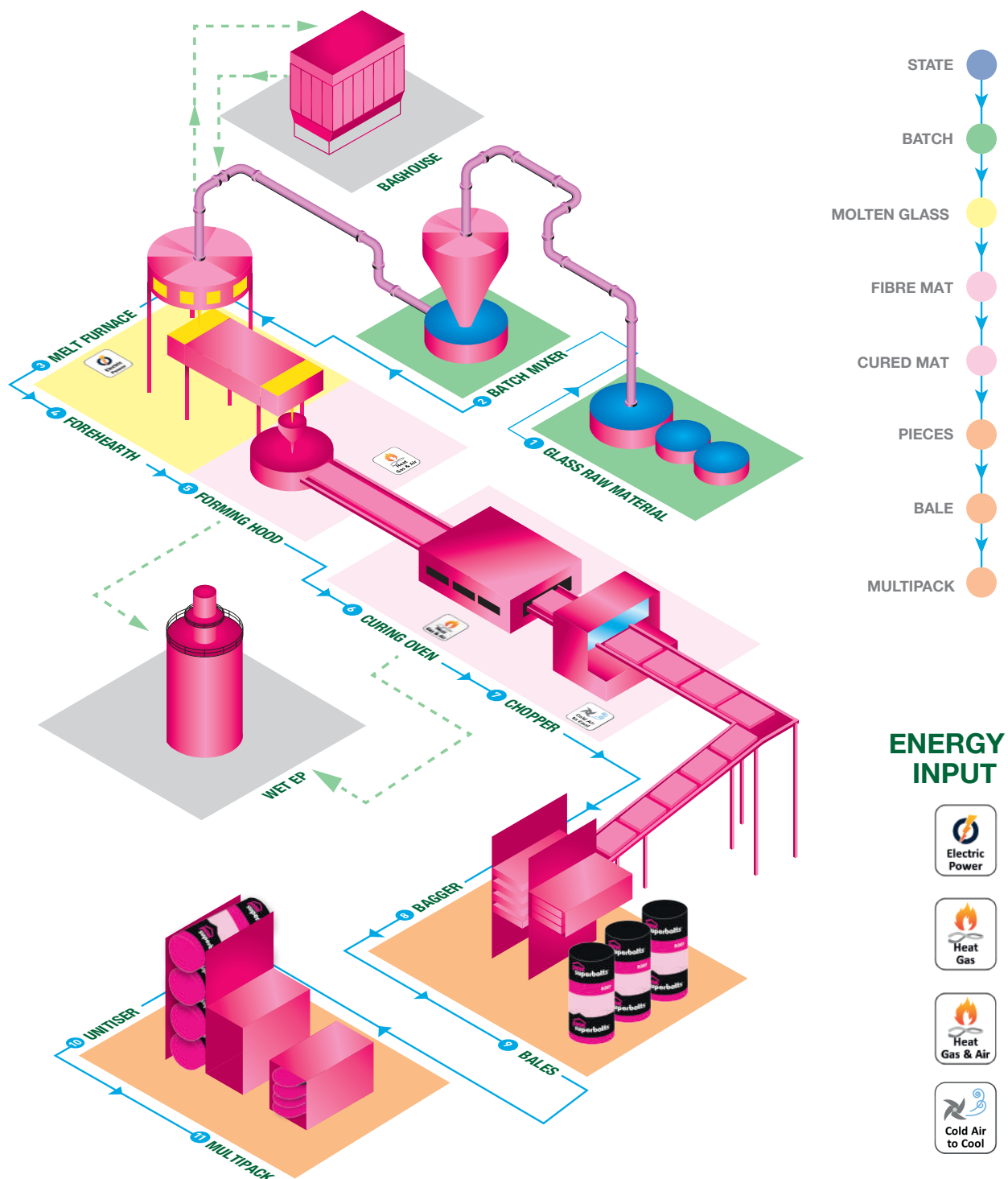
- We recycle water back into our manufacturing process, including wash water, saving approximately 1,000l of potable water per day.
- All our pallets, Intermediate Bulk Containers, cardboard tubes and bulk bags are returned to local suppliers or third parties to reuse or repurpose.

## Homestar Points in 'Sustainable Materials'

- Homestar® is an independent rating tool that measures the health, warmth and efficiency of New Zealand houses. When you specify Pink® Batts® glass wool insulation, you are eligible to claim points under category for your Homestar house design.

# WORLD CLASS MANUFACTURING

While it might look complex, the outcome is simple: a quality, trusted product that works hard for Kiwi families and our precious environment. Every product produced at our Auckland site is tested and designed specifically for New Zealand conditions.



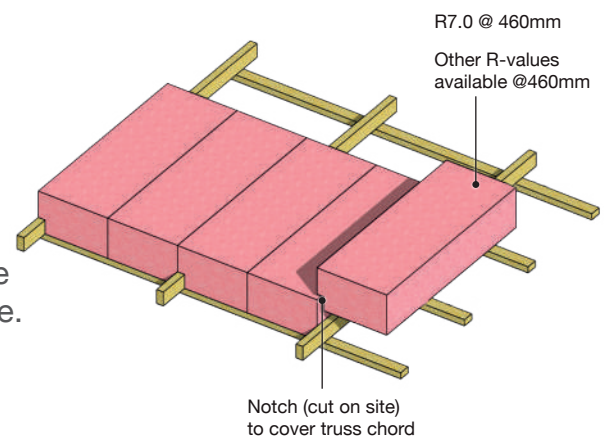
# FOR SOLUTIONS

# ENERGY EFFICIENT HOMES

To meet the H1 insulation changes, Comfortech® have collaborated with key industry stakeholders to lead the way with a range of residential solutions that **specifically address thermal bridging**, delivering optimal outcomes for energy efficient homes.

## Single-layer solution

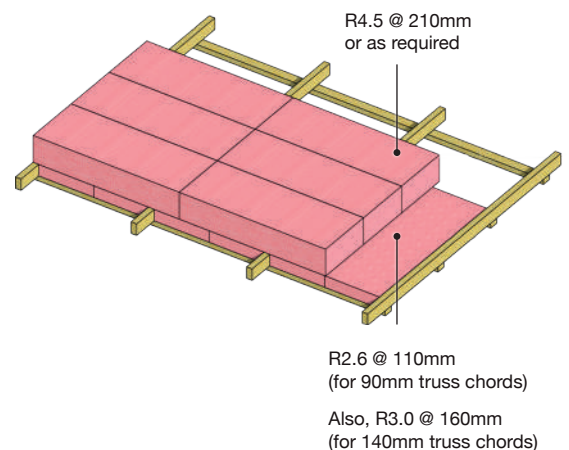
For residential ceilings, our single-layer solution includes our Pink® Superbatts® R7.0 at the new width of 460mm, where segments can be notched and fitted around the truss chord to seal the thermal bridge.



## Double-layer solution

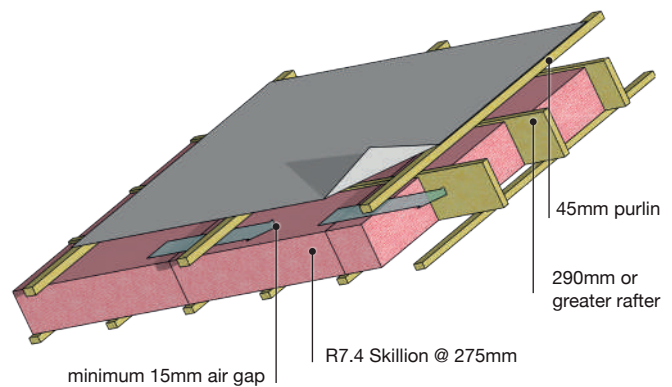
Our double-layer solution uses a first layer of high-density Pink® Superbatts® insulation of 110mm or 140mm thickness, to match the chord height.

The second layer uses our Pink® Superbatts® R4.5, installed at right angles to the first layer, with this method, the thermal bridge is completely closed. A lower R-value second layer can also be selected where another compliance pathway method has been chosen.



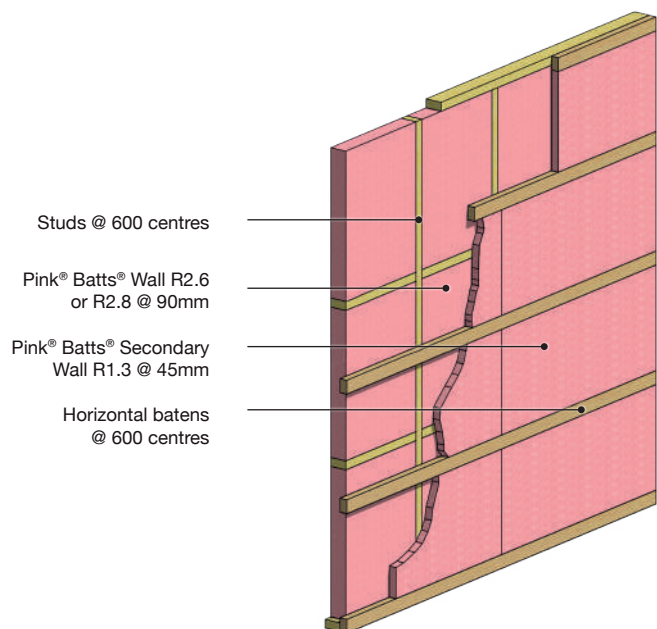
## Skillion Solutions

Comfortech® have specifically developed a Pink® Superbatts® Skillion Roof R7.4 that will allow a single layer solution to the Schedule method R6.6 requirement, it is however limited to a 290mm deep rafter depth. If the rafter depth is less than 290mm, we recommend a two-layer solution, using a first layer of R6.0 at 235mm thickness between the rafters and a second layer of Pink® Superbatts® Skillion Roof R1.0 (at 40mm thickness) to be installed below the rafters, between the ceiling battens, with rafters at 900mm centres this will meet the required R6.6 construction.



## Secondary Insulation Layer Wall Solution

This enables the delivery of a 90mm timber frame wall, with a secondary insulation of 45mm thickness between internal battens. This solution delivers a thermal performance which exceeds that of a 140mm R4.3 Pink® Batts®. The bracing value of the plasterboard can still be utilised.



## Visit our H1 Hub

Comfortech® is committed to supporting the industry by providing the best H1 insulation solutions and up-to-date information on how to navigate these changes. With that in mind, Comfortech® has developed the 'H1 Hub', a go-to source for all H1 information, solutions, tools, advice, and resources.

## H1. Done.

WE'VE GOT YOUR INSULATION  
SOLUTIONS COVERED.



View our  
solutions



# LIFETIME PERFORMANCE

## The Importance of Installation

A poor installation job can decrease the benefits of your insulation, including impacting the overall R-value. Any gaps, tucks and folds will decrease your insulation's effectiveness, however using a professional installer can make all the difference.

PinkFit® are our preferred nationwide network of installers. Locally owned and operated, PinkFit® underwrite the workmanship to guarantee our Pink® Batts® insulation is installed correctly, maximising thermal performance over the lifetime of New Zealand homes.





# BACKED BY LOCAL

# SERVICE AND EXPERTISE

## Service

- Nationwide delivery
- Nationwide install network
- Made to order products
- Most extensive insulation range, always readily available
- Nationwide Sales and Customer Services Support Team

## Our Expertise

- Full New Zealand-based Technical Team
- Market Leaders in H1 support
- CPD Presentations
- Manufacturing tailored solutions for New Zealand homes for over 60 years

## Quality Control & Longevity

We understand the importance of testing every batch of our Pink® Batts® insulation to ensure that it performs over the lifetime of the building, and our 50-year product warranty is backed by our manufacturing history.





# OUR PEOPLE & SAFETY-FIRST CULTURE

---

## Employing Local Kiwis

Pink® Batts® are backed by Fletcher Building, one of New Zealand's most successful companies who make a fundamental difference to our country, by employing over 14,000 Kiwis and supporting the local economy.

At Pink® Batts®, our team are made up of local, New Zealand-based individuals who are here, on the ground, to support the industry and Kiwi homeowners.

We have a nationwide local Sales Team, Customer Services Team and Technical Support who help us to deliver on our purpose of creating New Zealand's most comfortable living and working spaces.

## Health, Safety & Wellbeing

At Pink® Batts®, we believe in the health, wellbeing and safety of our people and have created a culture where our team live and breathe our 'Protect' value, ensuring everyone goes home, free from harm every single day.

We have set ambitious, yet achievable, measures of success, which keep us accountable and contribute to achieving our goal of zero serious injuries.

## Our Health, Safety and Environmental Credentials

We are committed to health, safety and the environment, which is demonstrated through our **ISO 45001** and **ISO 14001 accreditations**.

These certifications highlight that as a business, our management systems are accredited to global standards, recognising how we minimise our environmental impact through manufacturing processes, sourcing products, and health and safety systems.

**Download  
our technical  
resources**



# MAKING A POSITIVE IMPACT

---

We're proud to partner with Habitat for Humanity New Zealand and the Asthma and Respiratory Foundation New Zealand (ARFNZ).

Through donations, awareness and our partnership initiatives we can support the work that Habitat for Humanity and the ARFNZ do to achieve their goals, where health matters and everyone has a decent place to live. Our partnerships enable us to change our society for the better, working towards a more sustainable future.



"It's moments like this that make all the work that we do have purpose and it is with great pleasure that we are able to help our community"

-Anthony Stone, Comfortech® General Manager



Habitat for Humanity New Zealand is a not-for-profit organisation, helping families to build and improve their homes.

At Comfortech®, we are incredibly proud of this partnership, as we can support the work that Habitat does to make decent and healthy housing a reality for those who need it most.

[www.habitat.org.nz](http://www.habitat.org.nz)



The Asthma and Respiratory Foundation New Zealand (ARFNZ) is New Zealand's principal authority for all respiratory conditions, representing the 700,000 New Zealanders living with respiratory disease.

As research shows that damp, mouldy and poorly ventilated homes affect the respiratory health of many New Zealanders, through our partnership we can achieve our goal of creating the most comfortable living and working spaces for all New Zealanders.

[www.asthmafoundation.org.nz](http://www.asthmafoundation.org.nz)

**pinkbatts.co.nz**  
**0800 45 4000**



The colour PINK and Pink® are registered trademarks of Owens Corning used under license by Tasman Insulation New Zealand Ltd trading as Comfortech Building Performance Solutions®. Batts®, Superbatts®, SnugFloor® and Ultra® are registered trademarks of Comfortech®. This document supersedes all previous versions and may have been superseded; is a guide only and the purchaser should ascertain the suitability of this product for the end-use situation intended and when used in conjunction with other products; and is provided without prejudice to Comfortech® standard terms of sale. Comfortech® prior notice. Refer to [www.pinkbatts.co.nz](http://www.pinkbatts.co.nz) or consult Comfortech® for further information. Do not use this product for any application not detailed in this document. All claims about this product are subject to any variation caused by normal manufacturing process and tolerances. The liability of Comfortech® and its employees and agents for any errors or omissions in this document or otherwise in relation to the product is limited to the fullest extent permitted by law. Except where the consumer acquires the goods for the purposes of a business, any rights a consumer may have under the Consumer Guarantees Act are not affected.

**9-15 Holloway Place, Penrose, Auckland**

May 2025