



Pink® Batts® Building Insulation Blanket

Product and Installation Guide

Pink® Batts® Building Insulation Blanket

Product and Installation Guide

Application

Pink® Batts® Building Insulation Blanket, is a lightweight flexible glass wool insulation product designed to:

- Thermally insulate commercial and industrial buildings
- Fit into standard framework, or be easily cut to fit into non standard framework
- Meet the requirements of the New Zealand Building Code (NZBC) for different designs and environments

Features and Benefits

- Absorbs sound – reduces rain noise for a quieter internal environment
- Easy to install – lightweight, flexible and simple design makes the installation fast and easy
- Non-combustible – will not easily burn in the event of a fire
- Made from over 80% recycled glass – making sustainable use of waste
- Designed for New Zealand building conditions

Product Specifications

| PRODUCT GLASS WOOL RANGE | Product Code | Size (mm) | Nominal Stabilised Thickness (mm) | Nominal Total Area Per Bale (m ²) | Approx. Coverage Per Bale* (m ²) | Eco Choice Aotearoa (Environmental Choice) | Environmental Product Declaration | BRANZ Appraisal Number |
|--|--------------|--------------|-----------------------------------|---|--|--|-----------------------------------|------------------------|
| ROOF – BUILDING INSULATION BLANKET (BIB) | | | | | | | | |
| R1.2 Pink® Batts® BIB Blanket | 7250502 | 14000 x 1200 | 50 | 16.8 | N/A | ✓ | ✓ | 238 |
| R1.8 Pink® Batts® BIB Blanket | 7270502 | 11000 x 1200 | 75 | 13.2 | N/A | ✓ | ✓ | 238 |
| R2.4 Pink® Batts® BIB Blanket | 7290502 | 9000 x 1200 | 95 | 10.8 | N/A | ✓ | ✓ | 238 |
| R2.6 Pink® Batts® BIB Blanket | 7200504 | 8000 x 1200 | 105 | 9.6 | N/A | ✓ | ✓ | 238 |
| R3.2 Pink® Batts® BIB Blanket | 7200505 | 6000 x 1200 | 125 | 7.2 | N/A | ✓ | ✓ | 238 |
| R3.6 Pink® Batts® BIB Blanket | 7200506 | 5000 x 1200 | 140 | 6.0 | N/A | ✓ | ✓ | 238 |

* Square metre coverage per bale are estimates and actual coverage may differ

Environment

Pink® Batts® insulation is a sustainable and energy efficient product.

- Manufactured using over 80% recycled glass, making sustainable use of waste
- Manufactured in New Zealand reducing shipping distances
- Recyclable packaging



Pink® Batts® Building Insulation Blanket

Product and Installation Guide

Green Star NZ Credits

Green Star is a comprehensive environmental rating system for buildings; materials with certain attributes can receive points that contribute to the overall score of a rated home.

New Zealand Green Building Council (NZGBC) does not test or certify products; they rely on the work done by third party certification bodies and eco labels like Eco Choice Aotearoa. Further information is available at nzgbc.org.

While only BRANZ appraised products are eligible for Eco Choice Aotearoa, all Pink® Batts® insulation products are manufactured in the same environmentally considerate way.

Health & Safety

Product Safety

Pink® Batts® insulation is a non-hazardous, safe product.

- IARC (International Agency for Research on Cancer) classifies glass wool formulation used to manufacture Pink® Batts® products as Group 3: 'Not classifiable as to its carcinogenicity to humans'. This is the same classification as caffeine, tea, hair colouring, chlorinated drinking water, saccharin
- Pink® Batts® insulation is bio-soluble. In the unlikely event any fibres are inhaled into the lungs they will dissolve in the body fluids and be cleared from the body




Indoor Air Quality

- Pink® Batts® insulation is certified under the GREENGUARD Certification Program. Being certified for indoor air quality gives an assurance that products meet strict chemical emissions limits (including minimal levels of VOCs and Formaldehyde), to help create healthier indoor environments

General Health

- Pink® Batts® insulation will assist in meeting the World Health Organisation recommendation for houses to be maintained at a minimum temperature of 18°C to provide a healthy and comfortable home
- A Wellington School of Medicine study found insulated houses resulted in families with fewer sick days and the economic benefit was double the initial cost of the insulation¹

Technical Data

| Properties | Result | Test/Method/Standard | Test Results |
|---------------------|---|--|----------------------------|
| Combustibility | Non-Combustible  | AS / NZS 1530.1:1994 | Group Number 1S |
| Early Fire Hazard | | AS / NZS 1530.3:1993 - Ignitability (Range 0-20) - Spread of Flame Index (Range 0-10) - Heat Evolved Index (Range 0-10) - Smoke Developed Index (Range 0-10) | = 0 = 0 = 0 = 0-1 |
| R-value | Various*  | AS/NZS 4859.1:2018 | |
| Corrosion | Non-Corrosive N/A | AS/NZS 4859.1:2018-Glass wool exempt | |
| Moisture Absorption | Non-Hygroscopic N/A | AS/NZS 4859.1:2002-Glass wool exempt | |
| Vermin Resistance | No Food Source  | AS/NZS 4859.1:2002-Glass wool exempt | |

¹ Howden-Chapman, P. et al. "Effect of insulating existing houses on health inequality: cluster randomised study in the community" British Medical Journal, 2007, p334:460

* Refer to product specifications



Pink® Batts® Building Insulation Blanket

Product and Installation Guide

Acoustic Properties

Pink® Batts® insulation will assist with noise control, particularly rain drum under long run roofing, however any penetrations in roofing or walls will transmit sound readily. Superior noise control can be achieved by using Pink® Batts® insulation products in conjunction with good acoustic design.

New Zealand Building Code (NZBC) and Limitations

Pink® Batts® insulation when used, installed and maintained in accordance with the requirements outlined in this datasheet, will meet or contribute to meeting the following provisions of the NZBC:

NZBC Clause B2: Durability

- Meets the requirement NZBC B2.3.1 a) 50 years and NZBC B2.3.1 b) 15 years

NZBC Clause E3: Internal Moisture

- Contributes to meeting these requirements

NZBC Clause F2: Hazardous Building Materials

- Meets this requirement and will not present a health hazard to people

NZBC Clause H1: Energy Efficiency

- Contributes to meeting this requirement

Limitations

To meet the provisions of the NZBC as outlined in this datasheet, Pink® Batts® building insulation blanket must be:

- Installed and maintained in a dry protected environment
- Installed in a building where the provisions of NZBC E2 and E3 are met

Pink® Batts® building insulation blanket should not be:

- Crushed, folded or compressed
- Used where the maximum operating temperature is above 150°C (Faced product may be lower)

Pink® Batts® Building Insulation Blanket

Product and Installation Guide

Installation Instructions

Correct installation with no compression, gaps or folds is critical to ensure Pink® Batts® Building Insulation Blanket performance is not compromised.

Safety

Each installation is unique so prior to installation check for all hazards that may cause injury:

- Carry out any required repair work before starting installation
- Ensure safety measures for working at height are in place (refer to the Health and Safety in Employment Act)
- Ensure there is adequate lighting to identify any hazards
- Treat all electrical cables as live, being careful not to cut or expose cables and wires
- Beware of other sharp objects (protruding nails, splinters etc), pests (bees and wasps), loose boards and pipe work

Note: Seek professional advice if you are unsure how best to isolate the hazard or have a professional installer carry out the work on your behalf.

We recommend PinkFit® professional installers. PinkFit® are a nationwide network of professional installers who guarantee that their completed installation will meet the requirements of NZS 4246:2016.

For your local PinkFit® installer call **0800 746 534** or visit pinkbatts.co.nz/installing-pink-batts/

Installation

For your comfort while installing, it's recommended you wear:

- Loose fitting work clothes which cover the arms and legs
- Covered shoes
- Dust mask
- Safety glasses

For safety while installing, it's recommended you use:

- Cut resistant gloves (if knife is used)
- Kneepads (for retrofitting)

For an efficient installation, the following tools are recommended:

- Stable working platform (for new build)
- Knife
- Tape measure
- Head torch (for retrofitting)
- Kneeling board or planks (for retrofitting)



Pink® Batts® Building Insulation Blanket

Product and Installation Guide

Instructions

Roof Applications:

The methods of application described in this document are the most commonly used in New Zealand and should not be taken as specific design.

- Ensure the product is installed dry
- Full support of insulation on mesh or safety netting is required
- A 20mm clearance must be maintained between the insulation and roofing underlay. See diagrams overleaf for typical installations
- Fit insulation tightly around all roof penetrations, vent pipes, etc
- Where flues or other similar heat emitting elements pass through the insulation layer a appropriate clearance should be maintained between that item and the insulation
- Where cutting is necessary use a sharp knife and straight edge
- Fit Pink® Batts® insulation beneath electrical wiring and plumbing (see caution below)

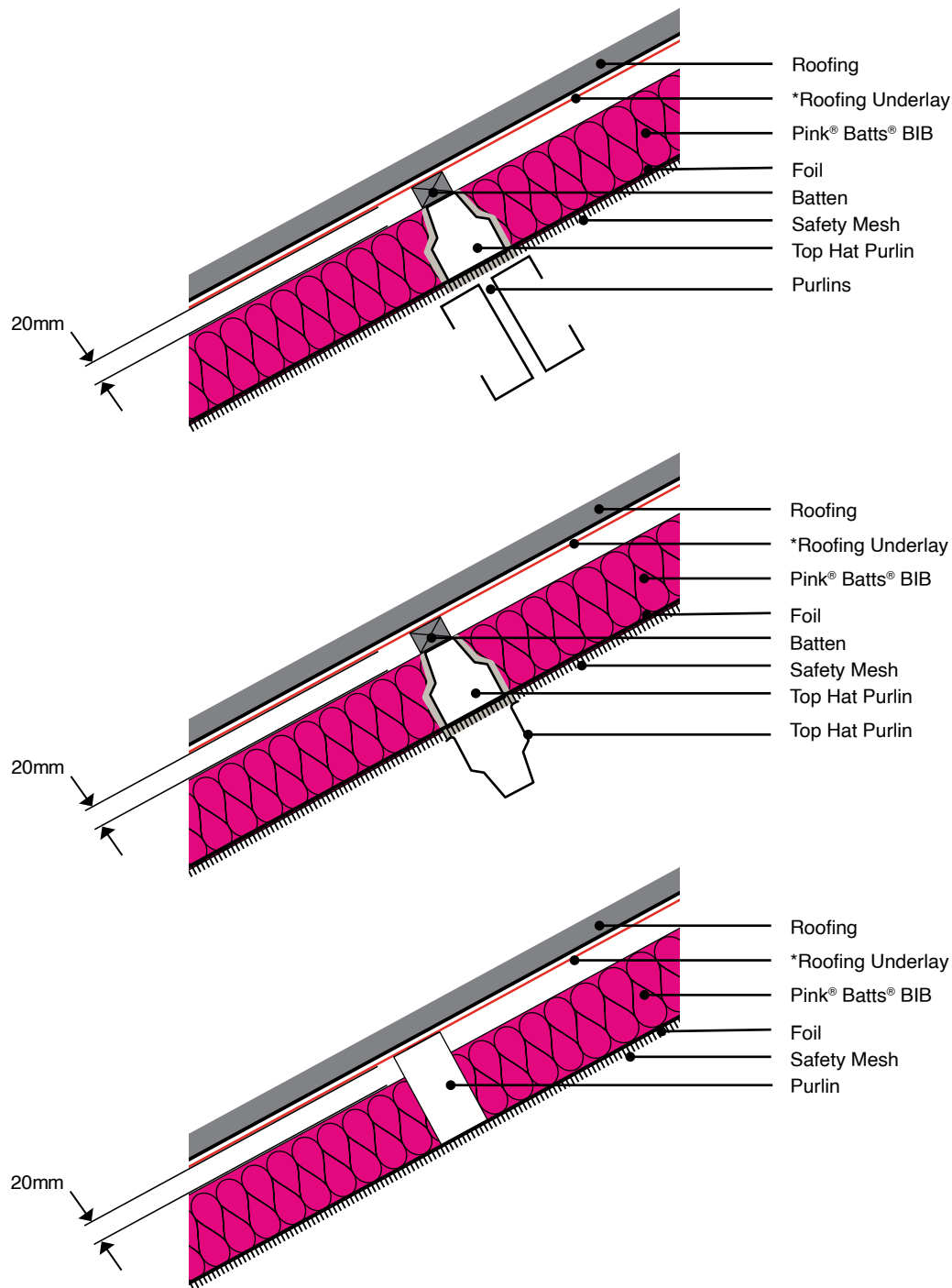
Refer to NZS 4246:2016 for further information related to the correct installation of insulation around electrical auxiliary devices and downlights for residential applications only.

***Caution:** Electrical cables and equipment partially or completely surrounded with bulk thermal insulation may overheat and fail.

Pink® Batts® Building Insulation Blanket

Product and Installation Guide

Commercial Roof Insulation Installation



Consider adding ventilating battens which can improve airflow such as castellated timber battens or uPVC battens with a honeycomb-type structure. The battens should be installed between the underlay and the purlin. Adding this gap for airflow above the purlin can significantly increase the airflow cross-section at the purlins. This reduces both the potential for air trapped near the cold roof cladding and airflow resistance inside the roof.

*Roofing Underlay may require additional support depending on underlay specified and purlin spacing.

Pink® Batts® Building Insulation Blanket

Product and Installation Guide

Wall Applications

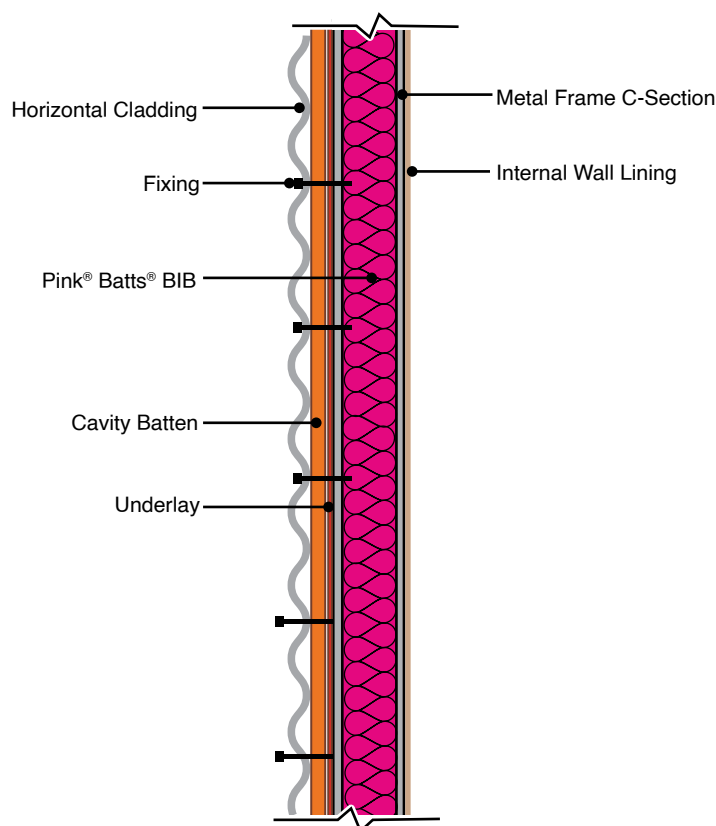
The methods of application described in this document are the most commonly used in New Zealand and should not be taken as specific design.

External Wall Installation:

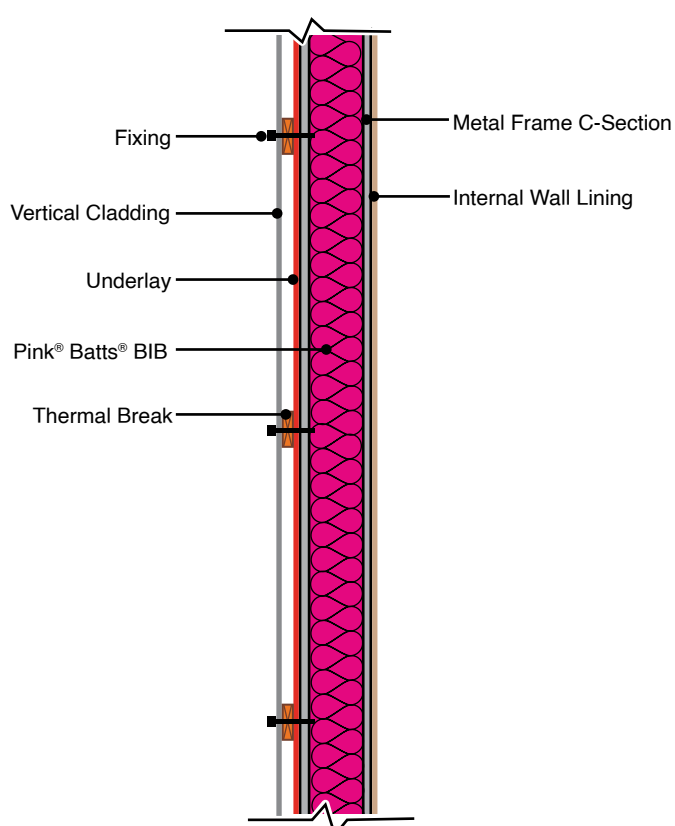
- Ensure the product is installed dry
- Where possible slot the piece of insulation into the C section. Friction fit product between framing in other cases
- If cutting is required, cut to size allowing insulation to fit neatly into the C section
- Ensure there are no gaps, folds or compression of product
- Do not cover vents. Insulate around vents to allow unhindered ventilation
- Partially cut insulation and place around wires or pipes if necessary
- Appropriate clearance around metal chimneys and flues
- An appropriate wall underlay is recommended between the insulation and the wall cladding

*Caution: Electrical cables and equipment partially or completely surrounded with bulk thermal insulation may overheat and fail. This applies to wiring installed prior to 1989.

Horizontal Profile Metal Cladding



Vertical Profile Metal Cladding



Pink® Batts® Building Insulation Blanket

Product and Installation Guide

Storage and Maintenance

Pink® Batts® insulation should be protected from damage and weather. Store under cover in clean, dry conditions. The installed product should remain dry at all times. If the product becomes wet or damp, the source of dampness (e.g. leak in building) should be repaired and any wet or damp insulation should be removed and replaced with new insulation of an equivalent R-value.

Disposal of bags

Recyclable LLDPE bags are used for packaging of Pink® Batts® insulation.

For further details download the relevant product data sheet from pinkbatts.co.nz



Comfortech Building
Performance Solutions®
Certified QMS



pinkbatts.co.nz

0800 746 522

The colour PINK and Pink® are registered trademarks of Owens Corning used under license by Tasman Insulation New Zealand Ltd trading as Comfortech Building Performance Solutions®. Batts®, Superbatts®, SnugFloor® and Ultra® are registered trademarks of Comfortech®. This document supersedes all previous versions and may have been superseded; is a guide only and the purchaser should ascertain the suitability of this product for the end-use situation intended and when used in conjunction with other products; and is provided without prejudice to Comfortech® standard terms of sale. Comfortech® retains the right to change specifications without prior notice. Refer to www.pinkbatts.co.nz or consult Comfortech® for further information. Do not use this product for any application not detailed in this document. All claims about this product are subject to any variation caused by normal manufacturing process and tolerances. The liability of Comfortech® and its employees and agents for any errors or omissions in this document or otherwise in relation to the product is limited to the fullest extent permitted by law. Except where the consumer acquires the goods for the purposes of a business, any rights a consumer may have under the Consumer Guarantees Act are not affected.

9-15 Holloway Place, Penrose, Auckland

January 2026

